

THE GALLERY

MAY/JUNE 2021

ISSUE 59

sama-art.org

The Preakness Gala

Saturday,
May 15, 2021



Off to the Races! It's time for The Preakness Gala

Our annual Gala is the largest fundraiser for SAMA and helps to support our five museums that bring art education programs to all, including local school districts and centers for our veterans. After the elation and success of the Derby Day Gala last year, this year the date and theme are based on the Preakness race on May 15, 2021. The Preakness Gala promises to be a grand, sophisticated, and entertaining evening scheduled from 5:00 p.m. – 10:00 p.m. at the

Winsome Estate & Stables located at 391 Tel Power Road, Hollidaysburg, PA 16648. **Reservations are required by May 12th** and can be made online on the Loretto gala page of sama-art.org or by contacting the museum at (814) 472-3920.

Wear Preakness themed attire and enjoy delicious cuisine, beverages, live and silent auctions, demonstrating artists, casino, and live music by the band Kono Nation. The *(cont. on page 7)*

Inside this issue



**DONALD M. ROBINSON
PHOTOGRAPHY BIENNIAL**

EXHIBITION AND EVENTS
AT LORETTO APR 16 - JUN 25

Page 3



FASHION SHOW EVENT

SEE THIS AND OTHER EVENTS
HAPPENING IN MAY

Pages 4 & 5



FUNDRAISER FEATURE

LEARN MORE ABOUT THE
PREAKNESS GALA AND
LIGONIER'S GARDEN PARTY

Page 7

**Subscribe to our website to join our email list and
be the first to know about events like these!**



FIND US ON [FACEBOOK](#) AND [INSTAGRAM](#)

PLAN YOUR VISIT TODAY!

GALA LIVE AUCTION ITEMS ANNOUNCED

Check out the amazing items up for auction! This year's live auction will feature art and sculpture, unique garden features, dream vacations, excursions and overnight stays such as a Hilton Head one week stay at Loggerhead Pointe beach including transportation and more. To make a pre-bid for the Live Auction, contact Sandie at shampton@sama-art.org. See page seven for more event details.

Dream Vacation of Your Choice Opening Bid: \$1,500

Get away to the resort destination of your choice anywhere throughout the United States or over eighty international locations through Interval International based on availability. This package from Barbara and Larry Savino includes accommodations only: one bedroom which sleeps up to four guests. Buyer is responsible for all travel, food, and beverage costs. Must be used before December 20, 2021.

Donor: Barb and Larry Savino



Butterfly Bench and Table Opening Bid: \$500

Butterfly benches have graced the gardens of the best homes for years. This bench comes courtesy of the McLanahan Corporation.

Donor: McLanahan Corporation

War Horse Opening Bid: \$400

Helen Gorsuch is such an amazing artist with a creative mind and magic hands. Her Raku creatures always have such a personality. This Medieval Knight on a War Horse is so unique, it's the only one you'll ever see or own!

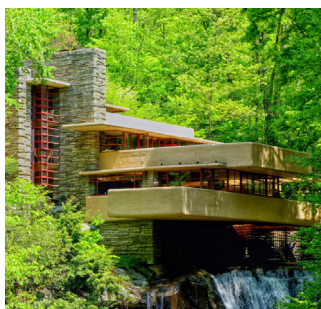
Donor: Helen Gorsuch



Fallingwater Weekend Getaway Opening Bid: \$900

Enjoy a wonderful weekend at Frank Lloyd Wright's famous Fallingwater. Since its opening to the public in 1964, more than five million visitors have experienced this architectural masterwork. This package includes a weekend stay in a rustic two-bedroom cabin, a private tour of Fallingwater, and a champagne brunch.

Donor: Fallingwater



Saint Francis University Scholarship Opening Bid: \$1500

Help the young student in your life with this tuition scholarship to Saint Francis University. The scholarship is payable as \$1,500 per year over four years for first-time, full-time undergraduate students. The scholarship will be renewed every year provided the student remains in good academic and social standing with the University. Student must maintain a cumulative grade point average of 3.0 by the end of freshman year and maintain this mark throughout their academic career. More terms and conditions apply. Request full information upon pre-bid placement.

Donor: Saint Francis University



Hilton Head Vacation & Private Jet Opening Bid: \$10,000

A vacation to end all vacations! The Bruno DeGol family has presented us with the ultimate getaway. One week stay at their amazing Loggerhead Pointe beach house in Hilton Head, SC! This seven-bedroom, 7.5 baths, luxury vacation home offers dramatic ocean views of the Atlantic, exceptional design, spacious layout, and the finest amenities. Sleeps up to 16 guests. This beach house has a pool, patio, and an outdoor spa while being located close to many top-notch golf courses. Private Jet transportation for 9 occupants from Altoona/Martinsburg. Dates available: Saturday, October 30th returning Saturday, November 6th.

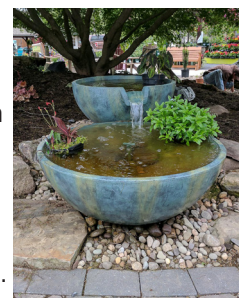
Donor: The Bruno DeGol Family



Spillway Bowls Opening Bid: \$1,000

Spillway bowls can create, transform and refine any pond, garden or water feature. Sure to impress, from Tussey Landscaping, these bowls can be installed as a stand-alone or incorporated into an existing garden. Installation is included in purchase price.

Donor: Tussey Landscaping, LLC



DONALD M. ROBINSON PHOTOGRAPHY BIENNIAL

We have many events planned to enhance your experience of the Donald M. Robinson Photography Biennial 2021 exhibition.

Register to attend events associated with the exhibition at sama-art.org. Exhibiting artists in the Donald M. Robinson Photography Biennial 2021 will discuss their work in a coffee house-like setting on Wednesdays at Artist Café. Exhibition juror, Linda Benedict-Jones will present a virtual discussion “Survey of Landscape

Photography” at noon May 24th via Zoom. The program will delve into the historical aspect of landscape photography and will include some of Donald M. Robinson’s photographs. Meet local exhibiting artists at the awards reception where the award winning exhibiting photographer’s will be announced.

DONALD M. ROBINSON

Donald M. Robinson, an internationally acclaimed photographer, traveled the world in search of compelling images. Numbering in excess of 800 objects, the Robinson collection includes documentary and nature photographs taken on six continents and in more than 60 countries. Although diverse, Robinson’s subjects are united in the artists self-conscious search for beauty and universal empathy. Echoing nineteenth-century paintings of the Hudson River School, Robinson’s landscape photographs are notable for their amplitude and scenic grandeur. Robinson studied photography with Cole Weston, Jay Masiel, William Neill, Arnold Newman, and Philip Hyde. He has exhibited his work widely, and has received numerous distinctions, including the title of EFIAP (Artist of Excellence) from the Fédération Internationale de l’Art Photographique and the Galaxy Award of the Photographic Society of America.

In consort with the Donald M. Robinson Photography Biennial Exhibition, SAMA will be exhibiting photographs from the Museum’s Donald M. Robinson Collection in the Margery Wolf-Kuhn Gallery: *Through the Lens: Landscapes by Donald M. Robinson*.



Wednesdays
May 19th & June 16th
Time: 4:00 p.m. - 5:00 p.m.
Cost: \$5



Monday, May 24th
Time: 12:00 p.m. - 1:00 p.m.
Cost: FREE



Saturday, June 5th
Time: 6:00 p.m. - 8:00 p.m.
Cost: \$20



Stop in the museum store to bring a memory home from your visit to the Donald M. Robinson Photography Biennial 2021 exhibition.

For more than fifty years, Donald M. Robinson has explored landscapes, wildlife, and the human condition. Reflecting on the power of the photographic medium resulting in an enduring source of inspiration for future generations, Robinson also exhibits a mastery of technical complexities. From the dawn of nature’s beauty to the last frontiers on earth, his photographs extend

beyond documentation; the collection is a novel of personal experiences and expressions of the universe and all its glory. The Staff worked together with Trustee Mari-Pat Beane to design and produce an adult and children’s coloring book of the Donald M. Robinson photography collection in honor of the first Biennial in his name. Merchandise is also available online at sama-art.org on the shop page.



Ligonier Fashion Show

Wear your favorite hat and join us at Ligonier for a dynamic fashion show featuring Saint Francis University Costume Designer, Bonnie Resinski.

“Silhouettes: A One-Woman Fashion Show” is being held from 2:00 p.m.—4:00 p.m. on May 22nd, and the cost is \$25 per person. Reservations are required by Friday, May 14th and can be made online at sama-art.org or by contacting the museum at (724) 238-6015 or ligonier@sama-art.org.

Experience this wonderful lecture and fashion show by Resinski as she discusses and shares the shapes of modern women’s clothing from the 1890’s to the 1990’s. She will highlight the social, political, economic, and designer influences explaining the fashion trends of the 20th century.

Watch the show while sipping a hot cup of tea and savoring scrumptious treats. Throughout the afternoon, stroll through our lovely Museum and bid on a beautiful selection of brand-new purses from regional boutiques and specialty shops. Enjoy other games of chance including a prize given for the “Best of Show Hat”

worn during the event. Bring your friends and join us at SAMA Ligonier for a wonderful afternoon full of entertainment, fun and fashion. Refreshments generously sponsored by Aurora Gilmour and Chantel Ventura.



Poignant Moments:

A NEW PHOTOGRAPHY EXHIBITION OPENS AT BEDFORD

Bedford’s “Poignant Moments: A Photography Exhibition” will be on display from May 8, 2021 through August 14, 2021. The exhibiting artists are Pennsylvania natives Josiah Weaver and Scott J. Walsh.

These gentlemen have found that the camera allows them to explore and capture poignant moments in their surroundings through film. Each artist expertly showcases impactful explorative moments to share with us. SAMA Bedford invites

you to enjoy the perspective of two photographers’ work that ranges from moody landscapes to vibrant cityscapes. You will not want to pass on the opportunity to experience their remarkable observations!

Visit the museum during regular hours of operation Tuesday through Saturday noon until 4:30 p.m. and subscribe to our email list at sama-art.org to stay updated on new events and exhibitions.

DINNER AT ALTOONA

Guests have private access to the museum for the duration of their two-hour reservation. Dinner includes soup or salad, an entrée, dessert and wine with the following entrée options: pizza starting at \$60 per couple, pasta starting at \$120 per couple, or seafood starting at \$150 per couple. The party could consist of up to 6 individuals.



Check our website for available dates in May. New dates will be added monthly. ‘Like’ SAMA Altoona’s Facebook page [@SAMAAaltoona](https://www.facebook.com/SAMAAaltoona) to keep updated on all.

DAY WITH SAMA



See how DC influencer, Julia Brouillette, enjoyed her Champagne Tour during her visit to downtown Bedford, PA on [Instagram](#) @juliakbrou.

Champagne Tours

Bedford is now offering guided tours of the exhibitions. Don't miss this exclusive opportunity to access great art one-on-one. Reserve the museum for a private tour with SAMA staff while sipping a complimentary glass of champagne. Reservations are \$75 for a party of up to five individuals and can be made online at sama-art.org or by calling the museum at (814) 589-3020.

Tours are available during our regular hours of operation Tuesday through Saturday between noon and 4:00 p.m. or after hours upon request. Guests will enjoy the history of the building for the duration of their one-hour reservation. Let us guide you through each gallery where you can immerse yourself in the experience of fine art.

SHOP MUSEUM STORES

Now you can support your local art museum with SAMA gear.

Wear your heart on your sleeve by showing love for SAMA at the grocery store, the shopping centers, and everywhere you go! Multitask while creating art with the new SAMA paintbrush pencil that can draw or paint in one unique tool. Sigh while viewing art at SAMA in a SAMAahhh t-shirt or carrying a tote. Merchandise is available in stores or online at sama-art.org on the shop page.



Foundations for Painting

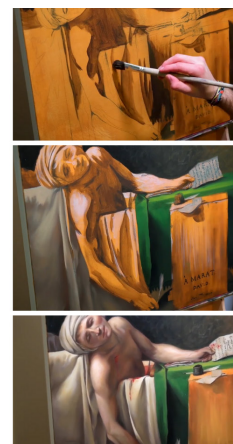
Altoona is having a weekly virtual painting class on Fridays in May to celebrate the opening of the museum's *A Glorious Tradition* painting exhibition.



VIRTUAL CLASS

FOUNDATIONS FOR PAINTING

MAY 7-28, FRIDAYS
12:00-12:30 PM



Delight in the Virtual Foundations for Painting - composition, brush and painting techniques, art history, and color theory. New students are welcome throughout the four-week course.

Learn a different topic each week as artist Alex Hess, a Pittsburgh-based artist, takes you through weekly lessons designed to encourage your painting practice. Each week will focus on a specific topic:

Week 1: creating a harmonic composition on any size and surface.
Week 2: the importance of underpainting and how some artists prefer doing it.
Week 3: how to achieve a targeted color by mixing different colors.
Week 4: each brush and how certain ones help to provide certain characteristics within painting.

Guests will attend via Zoom and have private access to the recordings after the class. This class costs \$25 per person. Reserve online at sama-art.org.

ARTS IN EDUCATION

TEACHING ARTISTS AND ARTS FOR HEALING

A local Girl Scout Troop is journaling with SAMA Teaching Artist, Deb Bunnell on Fridays. They meet on Zoom where Ms. Deb has various lessons planned for them each week. They are being introduced to different mediums such as graphite pencils, micron and sharpie pens, and watercolors. They are drawing upside down, with a grid and are journaling in between sessions. SAMA provided art kits with all the necessary materials and instruction courtesy of the Pennsylvania Council on the Arts all with the generous support of our EITC sponsors. See sponsors at page bottom.

Participants worked virtually with SAMA Teaching Artist, Evgeny Krayushkin, for a 10-day series of Positive Change. We worked to create art kits, so the participants could pick them up prior to starting the program. The participants were able to explore positive energy through art and its creative process. According to Evgeny, "Art is about the journey and the discovery (whether external or internal) and ultimately, my goal is to teach that concept. Art is an individual journey; it is in the process, in the action, in the movement, in the struggle, and in the search -- the acts of an individual journey."

VIRTUAL AND IN PERSON PROGRAMS

Spring is always a busy time for our Arts in Education programs, and this year is no exception. The biggest changes are that most of our programs are virtual with a few remaining in person. We are grateful to the Pennsylvania Council on the Arts for their continued support and flexibility during these challenging times. Our Arts in Education and Artist in Residence programs are visiting schools through Zoom this year which has its difficulties, but our group of artists are up to the challenge. They are creating murals virtually and in person, as well as sculpting, drawing, painting, and journaling virtually. We are even working on a virtual mosaic class.

While virtual programming has been beneficial, we are still planning in person events, so be sure to join our email list, follow us on Facebook or Instagram and check our website for all types of events and programs happening throughout your region.



Expanding on a three-year partnership with Stanwood Elementary (Hempfield Area School District) and SAMA, we designed and implemented a new virtual residency and performance program to bring museum experiences directly to students in third grade classrooms at Stanwood. This twenty-day residency launched the creation of "Art Transports Us," an interactive virtual field trip, featuring select works of art from the museum and original dance films created by Attack Theatre.

This interactive tour highlights the cycle of inspiration from visual arts to student learners to professional dancers. It features 10 dance vignettes inspired by conversations with the students about select works of art from Loretto's Biennial Exhibition and Ligonier's Southwestern Pennsylvania Council on the Arts Exhibition (2020). Third grade students at Stanwood created the dance moves based on the artwork from our museums, and they are performed by Attack Theatre. Please enjoy the interactive video on the education tab of our website at sama-art.org.

A special thank you to our Educational Improvement Tax Credit sponsors for all your continued support. We utilize funds to create virtual programs for local students, supply art kits for special programming, and bring our permanent collection into classrooms throughout our region at little or no cost to the school districts that want and need arts programming.

To learn more about becoming an EITC Sponsor, please contact Jess Campbell or Sandie Hampton at SAMA Loretto at (814) 472-3920.

EITC Sponsors

Benzel's Bretzel Bakery, Inc.
First National Bank

Kooman & Associates
Little Enterprises, LLC

M & T Bank
UPMC Altoona

The Preakness Gala (cont' from page 1)

Preakness race will be shown live on the big screen, the Casino will be open all evening and players can use their winnings to buy beautiful, bountiful gift baskets. Go back to page 2 to see details about this year's live auction items. The event is sponsored by Benzel's Bretzel Bakery. Be advised all CDC health and COVID-19 social distancing guidelines will be in place at SAMA events.

We are looking for fantastic items and gift baskets for our silent auction. Don't want to part with a cherished item? Or don't have time to assemble a basket yourself? Now you can donate the funds and SAMA staff and volunteers will do the preparation for you!

Go to the loreto [gala page](#) on our website to donate now, or contact Sandie at shampton@sama-art.org.



During the event, guests will enjoy two special exhibitions this year. In the main gallery, "Looking for the Light in Dark Times" will be on view and the artists, Jonelle Summerfield and mother, Jolene Joyner, will be present to greet visitors and discuss their work. An accompanying exhibition, "Back to Woodstock" of 1960's memorabilia and posters from the Collection of Mark Del Costello will most certainly bring back memories. Step back in time and enjoy these authentic music posters from noted artists including Jimi Hendrix and the Grateful Dead. These featured posters represent the original 1969 Woodstock. These exhibitions can be viewed during Garden Party to guests with reservations, or April 30—July 31 during regular museum hours of operation.

GARDEN PARTY

LIGONIER VALLEY IS TAKING GUESTS BACK TO THE 60'S WITH ITS NINETEENTH ANNUAL GARDEN PARTY.



Have a groovy time at Garden Party hosted on Saturday, June 12th starting at 5:00 p.m. at the Ligonier Valley Museum. "Woodstock: An Aquarian Experience" will be reminiscent of the late 1960s with delicious food, live music, silent auction items, and games of chance. Tickets for Garden Party are \$75 per person. Reservations are required by June 1 and can be made online at sama-art.org. The event is sponsored by Somerset Trust Company.

Outside the museum, guests will be greeted by a 1956 Volkswagen Beetle generously provided by Sendell Motors of Greensburg, PA. Inside the Museum and under the tent, guests will be treated to live music performed by Acoustic

Fingers. Games of chance will be offered as will a silent auction and 50/50 raffle. Dig the delicious "Woodstock-themed" trendy food menu served by the Ligonier Country Club. Work together with artists in interactive artist booths to create and purchase artwork from the vendors. Can you dig it?

"I am absolutely thrilled to be hosting our Woodstock Festivities this year," said Site Coordinator Kristin Miller. "We have all been cooped up at home and are really ready to get outside and enjoy one another's company in a safe and healthy manner. Dust off those bell bottoms, leather vests, and love beads and join us for a night to remember!"



PO Box 9, Loretto, PA 15940

Return Service Requested

NON-PROFIT
ORGANIZATION
U.S. POSTAGE
PAID
ALTOONA PA
PERMIT NO. 99



THE GALLERY is proudly sponsored by  **BENZEL'S BRETZEL BAKERY, INC.**

Altoona

1210 11th Avenue
Altoona, PA 16601
(814) 946-4464

Daily Hours:
Tuesday - Saturday:
12:00 PM - 4:30 PM

Bedford

137 E. Pitt St.
Bedford, PA 15522
(814) 589-3020

Daily Hours:
Tuesday - Saturday:
12:00 PM - 4:30 PM

Johnstown

450 Schoolhouse Road
Johnstown, PA 15904
(814) 269-7234

Closed due
to COVID-19.
Reopening TBD.

Ligonier

One Boucher Lane &
Route 711 South
Ligonier, PA 15658
(724) 238-6015

Daily Hours:
Tuesday - Saturday:
12:00 PM - 4:30 PM

Loretto

112 Franciscan Way
P.O. Box 9
Loretto, PA 15940
(814) 472-3920

Daily Hours:
Tuesday - Friday:
12:00 PM - 4:30 PM



[/SMAAAltoona](#)
[/SAMABedford](#)
[/SAMAJohnstown](#)
[/SAMALigonier](#)
[/SAMALoretto](#)



[/SMAAAltoona](#)
[/SAMABedford](#)
[/SAMAJohnstown](#)
[/SAMALigonier](#)
[/SAMALoretto](#)

sama-art.org