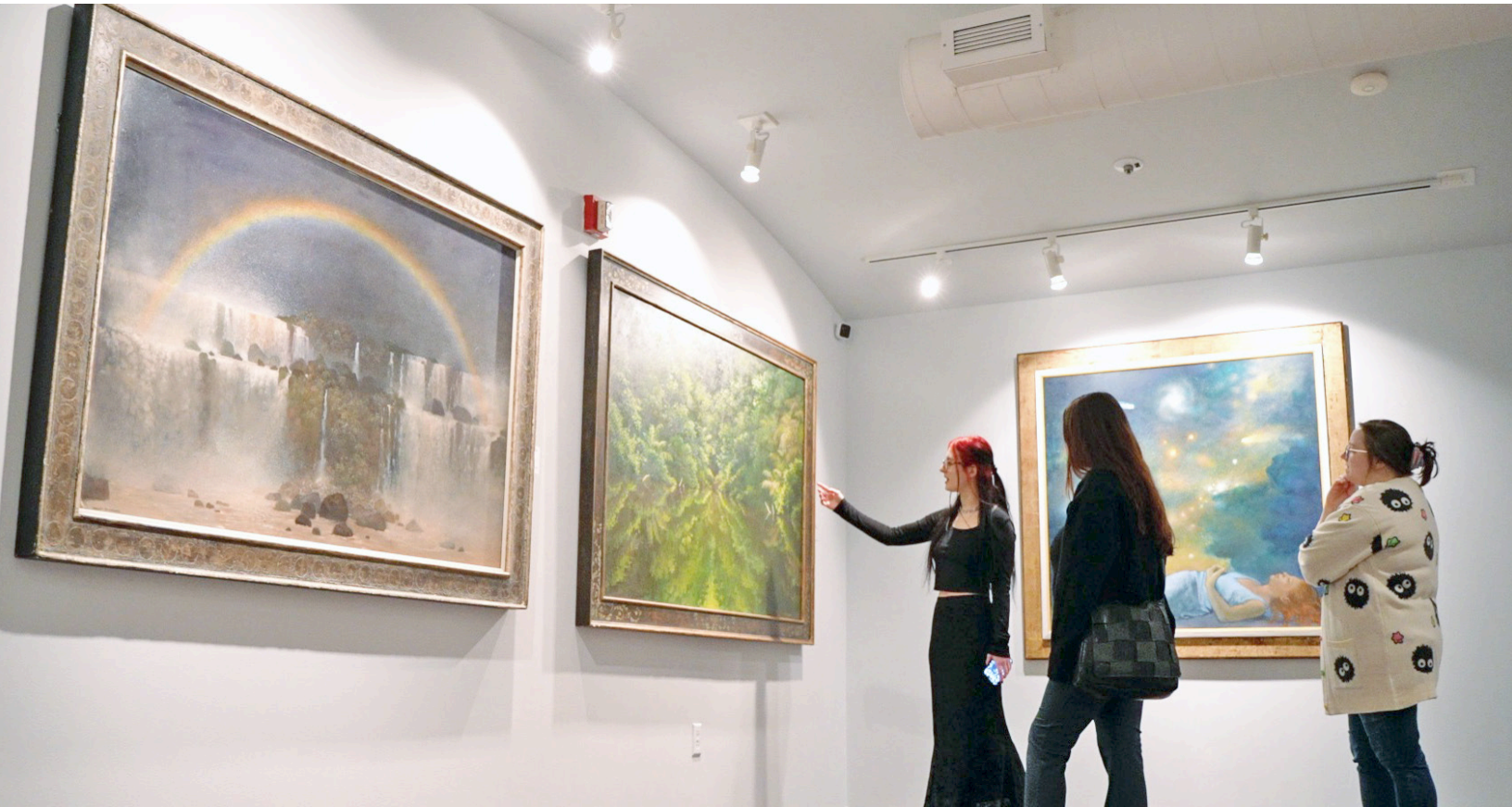


THE GALLERY



SOUTHERN ALLEGHENIES
MUSEUM OF ART
YEAR OF DISTINCTION

ISSUE 66
sama-art.org



The 2024 “Year of Distinction” at all SAMA sites

For nearly 50 years, your contributions have allowed our doors to be open to the public free of charge to all across the six counties that we serve, providing a space where everyone can gather and connect through the beauty of art.

From the heart of our museum to public spaces and local galleries, the masterpieces of our permanent collection are breaking free from traditional walls to bring

inspiration to unexpected corners of our community and beyond. We’re taking a moment to celebrate the exhibitions and community collaborations that will make this year truly distinctive.

Blue Lotus Artists’ Collective (BLAC) is a non-profit gallery space in Tucson, Arizona dedicated to supporting and uplifting Black Artists. For the

(cont. on page 2)

Inside this issue



WELCOME TRUSTEES

NEW FRIENDS
JOIN BOARD

Page 2



LOCAL ARTISTS

ANNUAL STUDENT
EXHIBITIONS RETURN

Pages 4



FUNDRAISERS

PAST SUCCESS AND
UPCOMING OCCASIONS

Pages 6 & 7

Subscribe to sama-art.org to join our email list and be the first to know about events like these!



FIND US ON FACEBOOK AND INSTAGRAM

PLAN YOUR VISIT TODAY!



Jacob Lawrence, *John Brown Held Harpers Ferry for Twelve Hours*-from *The Legend of John*, 1977.

Year of Distinction (cont' from front page)

Blue Lotus opening, SAMA lent prints from the dramatic "Legacy of John Brown" series by Jacob Lawrence which tell the story of Brown's violent insurrection against slavery in a series of 22 silk screen prints. SAMA is honored to share these artworks which were a generous gift of Audrey and Chester Cunningham in memory of Mrs. Marian McLaughlin Welman.

Here's to the collective spirit

that propels us forward, and to the anticipation of another year filled with creativity, connection, and continued distinction! Follow our facebook pages for more Year of Distinction highlights from the permanent collection.

@SAMAaltoona
@SAMAbedford
@SAMAjohnstown
@SAMAligonier
@SAMAloretto

WELCOME TRUSTEES

Educated and experienced new members join SAMA for an exciting new year!

We are pleased to announce our newest Board of Trustee members, Carly Cook and Barbara O'Brien. Cook and O'Brien will join existing members in overseeing the organization and representing SAMA proudly in the six counties we serve: Bedford, Blair, Cambria, Fayette, Somerset, and Westmoreland. Together they will fulfill SAMA's mission to preserve, exhibit, and advance American art and bring educational and cultural programs and activities to the people of the southwestern area of central Pennsylvania.

Carly Cook is a lifetime resident of Blair County and graduated from Hollidaysburg Area School District in 2008 and Penn State University in 2012. Cook is the Branch Manager of Jersey Shore State Bank where she takes pride in helping the community and businesses meet their financial goals. In her spare time, she enjoys spending time with her husband and family, gardening,

thrifting, and exploring new restaurants and boutiques. In this role, she hopes to bring awareness to the museum and all it has to offer, as we truly are fortunate to have such a cultural venue available to us within our Central Pennsylvania community.

Barbara O'Brien is from Loretto in Cambria County. She and her late husband Ed owned and operated the Brinkwood sheep farm in Loretto. She was also a part of the management team for the Wicklow Fuel Company they owned and operated in the area. Barb enjoys the farm, gardening, her grandchildren, her mother (91), travels to her vacation home in Florida, and all things SAMA. O'Brien stated, "It is both an honor and a privilege to now serve as a SAMA trustee and continue, just as my husband Ed O'Brien did, with our patronage and support of the arts and the artists of our region."

SAMA is honored to have your guidance and support!

SAMA ON BROADCAST TELEVISION

In our Annual Giving Campaign commercial, we painted a vivid picture of the impact of art in our communities. Against a backdrop of uplifting visuals, we highlighted the educational power of SAMA through the generosity of our members. From displaying award-winning exhibitions to fueling innovative education programs that shape our collective future, every donation provides hope, progress, and unity. Viewers were invited to join our artistic community by donating to SAMA's Annual Giving Campaign, igniting a wave of support that rippled across our region. Together, we are building a brighter tomorrow, one heartfelt donation at a time. View the commercial using QR code or by visiting sama-art.org.



EDUCATION UPDATE

This academic year, SAMA has hosted approximately twenty residencies throughout the six counties we serve.



See the completed mural at Altoona Area High School's store, Rachel's Closet.

The Artist-in-Residence (AIR) program provides students with an opportunity to interact directly with professional artists in a student/mentor relationship with mutual involvement in the creative process. Presentations for core groups are designed to offer in-depth learning about particular artistic disciplines.

A special 30-day residency was held at Altoona Area School District to redesign "Rachel's Closet," a unique store within Altoona Area High School offering free clothing and other essential items to its students. Led by SAMA Teaching Artist, Deb Bunnell, the residency was completed in collaboration with art teacher Kathryn Currie, her students, and a dedicated team supporting Rachel's Closet. The store serves as a poignant tribute to a student who tragically lost her life in the Columbine shooting.

Within the mural, the student's prophetic words are painted, serving as a poignant reminder of her spirit, inner strength, and timeless life lessons that resonate with all who visit Rachel's Closet. Through artistry and collaboration, the residency transformed the space into not just a store but also a sanctuary of remembrance, hope, and support for the entire school community.

Also this Spring, SAMA proudly hosts the "Art Sparks" Residency with the Pennsylvania Council on the Arts and the Pennsylvania Turnpike Commission at Shanksville-Stoney Creek School District. Led by art teacher Billie Jo Miller and SAMA Teaching Artist, Deb Bunnell, students will create two murals depicting Somerset County's scenic beauty and recreational activities. The murals will be permanently

BECOME A TEACHING ARTIST

SAMA Teaching Artists have the opportunity to provide hands-on art activities to students from a school participating in a SAMA residency. Approved artists are required to participate in professional development workshops that prepare them for the program and to attend advanced training each year they are listed in the approved Teaching Artist Directory.

Learn more and apply to be a teaching artist today to change a child's life tomorrow! Deadline for the 2024-25 school year, August 15, 2024. Visit sama-art.org/pcaresidencies.

displayed at the westbound turnpike Plaza in Somerset, PA, with a special ceremony honoring the students in May.

Thoughtful donations by members and patrons help us to bring innovative Arts-in-Education programs to our schools and celebrated American art to your hometown. Your gift to the annual giving campaign touches every aspect of museum operations and is critical to our success. Visit sama-art.org to learn more about the education department of the Southern Alleghenies Museum of Art, and make a donation by scanning the QR code.



EITC Sponsors

Benzel's Bretzel Bakery, Inc.
First National Bank

Little Enterprises, LLC
M & T Bank

SAMA CELEBRATES

RETURN TO REGULAR HOURS OF OPERATION

We're thrilled to announce that we're returning to regular hours of operation! Starting April 1st, we'll be open Wednesday through Sunday from 12:00 p.m. until 4:30 p.m. We are excited to welcome you back and look forward to providing you with the exceptional experience you know and love. Thank you for your continued support, and we can't wait to see you soon!

ARTISTS OF THE 21st CENTURY

SAMA celebrates the area's talented young artists with the Museum's twenty-sixth annual student art exhibition.



Student artworks on display in the Detwiler Education Center at SAMA Altoona.



ANNOUNCING DATES AND LOCATIONS

Altoona: June 24-28
@ Gloria Gates Memorial
Foundation Community Center

Bedford: July 8-12
@ Trinity Lutheran Church

Ligonier: July 29-Aug 2
@ Ligonier Watershed Assoc.



Register for art camp
and find more events
and workshops at
sama-art.org/events-list

The exhibition is open to schools that participate in SAMA's Arts-in-Education or Artist-in-Residence programs. Each district is permitted to submit up to 30 individual projects and two group projects. Through the programs, SAMA educators and professional artists travel to public and parochial schools to provide lessons designed to enhance students' understanding of art creation, technique, history, critique, and aesthetics. SAMA's award-winning education initiative is the largest of its kind in the Commonwealth. Artworks from the SAMA Education Collection that are used by the teaching artists in the Arts-in-Education program to educate students in a school setting accompany and supplement the exhibition.

At Altoona, artwork from schools in Blair, Somerset, and Cambria counties were displayed. Bedford

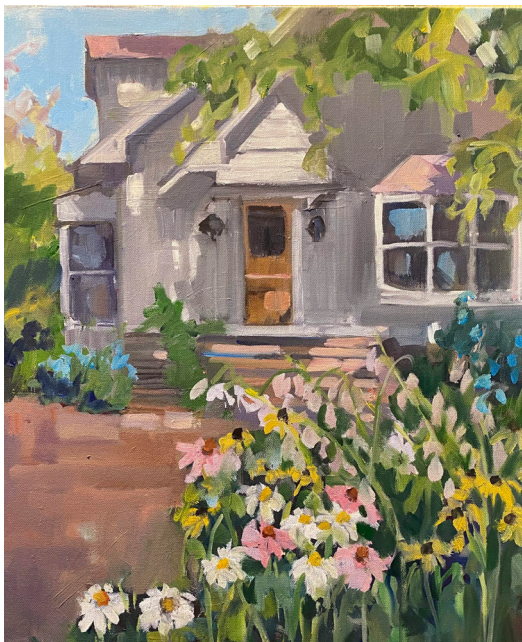
displayed student artwork from the Bedford County Schools, and Ligonier Valley showcased student artwork from schools in Fayette and Westmoreland counties.

These exhibitions are sponsored by the Sigma Chapter of Alpha Delta Kappa International Honorary Organization for Women Educators. This project was made possible through the AIE Partnership of the Pennsylvania Council on the Arts, a state agency.



Student sculptures at SAMA Bedford.

LOCAL ARTISTS



Doreen Currie, *Ligonier Cottage*, Oil on canvas.

28th SPCARTS

Another successful year for the annual juried regional exhibition.

Each year, the Southwestern Pennsylvania Council for the Arts endeavors to create a space where 19 southwestern county artists can showcase their current work at SAMA Ligonier. Last year's exhibition presented a fresh and eclectic mix of works from 60 regional artists. Thank you for supporting the emerging and established artists with your presence and patronage. Award winners of this exhibition are as follows:

FIRST PRIZE: Maura Keeney, *Ephemeral Grand Finale*

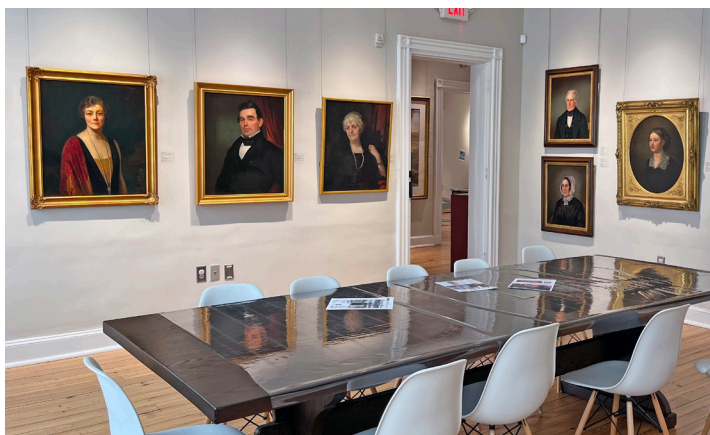
SECOND PRIZE: Eileen Sudzina, *Smoke Shop*

THIRD PRIZE: Joy Fairbanks, *Water*

FOURTH PRIZE: Kim Williams, *Kinstugi: Healing in the Broken*

AWARD OF EXCELLENCE: Marcia Koynok & Joseph Ryznar
AWARD OF MERIT: Ron Donoughe, Mark E. Weleski, Margaret Black, & Deborah Byham

PERMANENT COLLECTION SHOWCASES



Portraits on display in the Ashe Gallery at SAMA Bedford.



Del Costello posters on display at SAMA Johnstown.

In the Year of Distinction, SAMA has planned 24 exhibitions across all museum locations. This year, the staff as a collective has carefully coordinated to provide a remarkable journey through the heart and soul of our permanent collection. Visitors will be enchanted by the most extraordinary pieces that our collection has to offer.

Immerse yourself in nuanced brushstrokes and detailed

compositions of timeless faces at Bedford's "Best of the Best: Portraiture" exhibition on display through July 14, 2024. See rare posters from cinematic masterpieces, legendary music concerts, and groundbreaking television shows from the Del Costello poster collection in Johnstown's "Visions of Entertainment: A Journey Through Time and Poster Artistry" on display through May 12, 2024. "Contours: Land,

Rail, Rau" in coordination with "Passing Freight" will display railroad's past and present through photography by William H. Rau and Stephen Mallon. View the enduring legacy of a town from April 19, 2024 through July 7, 2024 at Altoona.

Additional highlighted artists include Norman Rockwell, Leonard Baskin, Donald M. Robinson, Colleen Browning, Mary Cassatt, and many more.



FUNDRAISER SUCCESSES

A successful return of Dueling Pianos and From Italy with Love.

Dueling Pianos: Neon Nights took place on Friday, November 3, 2023 at the Blairmont Club, and From Italy With Love was reinstated as a Valentine's weekend event held on Friday, February 16, 2024 at the Casino at Lakemont Park.

Danté DiAndrea, Site Director at SAMA Altoona, stated, "It's been so encouraging to see how

much support our community has given us for our most recent fundraising events. Dueling Pianos was incredibly well received by guests and the attendance was outstanding. I was thrilled to be able to present our supporters with an incredible evening of light and color all in celebration of the arts. I'm already working behind the scenes to plan the next Dueling Pianos and who knows what theme it will be! It's all very exciting.

From Italy with Love brought in over one hundred guests for an evening of culinary excellence with an elegant, Italian flourish. I'm so grateful to be able to work with our cherished community members and volunteers who help us achieve these amazing events. Without them, none of this would be possible!"

Become a member to receive invitations to these and other signature fundraisers for 2024!



Catch "the Frank Sinatra Show" by Rich DeSimone again next year!

DONATE. SPONSOR. ADVERTISE. SUPPORT.

Attending our signature fundraiser events is not the only way to help with SAMA fundraising.

- Donate items for silent auction like paid vacations and weekend getaways, tickets to concerts or sporting events, and themed gift baskets.
- Sponsor a table as a business or as a group of individuals to get reduced price tickets and be recognized in advertising and at the event as a SAMA supporter.
- Advertise your business with a print ad in the evening program to be seen by the crowd of diverse attendants.
- Donate to SAMA's annual giving campaign to allow for endless opportunities for your dollars to be put to use!

Thank you to all who support SAMA through donations, patronage, volunteering, attendance and committee membership to make our fundraisers such a success!

Find more details about fundraisers and events at sama-art.org



Mark Your Calendars



Sat, May 25 | Altoona Art for Your Heart

Lace up, and let your heart beat for the arts! This heart-healthy event invites participants of all ages and fitness levels to run, walk, and promote a healthy lifestyle while making a positive impact on the cultural vibrancy of our community. Pre-register for \$25 by May 3rd to be guaranteed a race day t-shirt. Race starts at 9:00 a.m.



Sat, Aug 17 | Bedford Biennial 2024

Join us for the Biennial 2024 exhibition Awards Reception at 6:00 p.m. Cost to attend is \$25 per person. Mingle with the artists and award winners. Appetizers, refreshments and imbibements are included. Registration is required for this event by Friday, August 9th and can be made online at sama-art.org or by contacting the museum at (814) 589-3020.



Sat, June 15 | SAMA Night Fever Gala

The 2024 Gala promises to be a fabulous evening to include "And We Danced" DJ entertainment, themed décor with lights and disco ball, dining, cocktails, and lots of dancing. Join us at the Altoona Grand Hotel from 6:00 p.m. – 11:00 p.m. We encourage our guests to wear fashionable attire, ala Travolta, if you choose.



Sat, Sept 14 | Ligonier Backyard Bash

Cozy up to SAMA at the new fundraiser, Backyard Bash! Enjoy an autumn backyard bash to kick off the fall season. Starting at 5:00 p.m. at the Ligonier Valley Museum, enjoy some cider and stroll through the pastel exhibition by the Pittsburgh Pastel Artists League. Later in the evening, relax by the fire and roast some marshmallows.

THANK YOU

TO ALL OUR AMAZING
BOARD MEMBERS AND
STAFF FOR YOUR SERVICE
IN 2024 AND BEYOND.

BOARD OF TRUSTEES

Barry Newborn, President
Ann Benzel, Vice President
Larry Savino, Treasurer
Joan Mudge, Secretary

Karen Azer

Meghan L. Bardell

Abigail Cook

Carly Cook

Hon. Timothy Creany

Fred Danziger

John K. Duggan, Jr.

Glenda Forosisky

Stephen A. George

Jeanne Gleason, Emerita

Deedra Kazmaier

Joan McCreary, Emerita

Br. Shamus McGrenra, TOR

Barbara O'Brien

Stephen Sloan

Chantel Ventura

Ehrin Ward

Gerald P. Wolf, Emeritus

STAFF

Danté DiAndrea

Sandra Hampton

Beverlie Hartnett

Hannah Harley

Erica Kilbride

Kristin Miller

Lee Rummel

Michael M. Strueber,

Director Emeritus



PO Box 9, Loretto, PA 15940

Return Service Requested

NON-PROFIT
ORGANIZATION
U.S. POSTAGE
PAID
ALTOONA PA
PERMIT NO. 99



THE GALLERY is proudly sponsored by



BENZEL'S BRETZEL BAKERY, INC.

Altoona

1210 11th Avenue
P.O. Box 3061
Altoona, PA 16601
(814) 946-4464

Wednesday-Sunday:
12:00 PM - 4:30 PM

Bedford

137 E. Pitt St.
Bedford, PA 15522
(814) 589-3020

Wednesday-Sunday:
12:00 PM - 4:30 PM

Johnstown

450 Schoolhouse Road
Johnstown, PA 15904
(814) 269-7234

Open during
performances at the
Pasquerilla Center

Ligonier

One Boucher Lane &
Route 711 South
Ligonier, PA 15658
(724) 238-6015

Wednesday-Sunday:
12:00 PM - 4:30 PM

Loretto

112 Franciscan Way
P.O. Box 9
Loretto, PA 15940
(814) 472-3920

Wednesday-Sunday:
12:00 PM - 4:30 PM



[/SMAAAltoona](#)
[/SAMABedford](#)
[/SAMAJohnstown](#)
[/SAMALigonier](#)
[/SAMALoretto](#)



[/SMAAAltoona](#)
[/SAMABedford](#)
[/SAMAJohnstown](#)
[/SAMALigonier](#)
[/SAMALoretto](#)



[@SAMAartonline](#)

sama-art.org