

THE GALLERY

JAN-APR 2022

ISSUE 62

sama-art.org

Artists of the 21st Century

STUDENT ART EXHIBITION



THIS EXHIBIT IS SPONSORED BY THE SIGMA CHAPTER
OF ALPHA DELTA KAPPA INTERNATIONAL HONORARY
ORGANIZATION FOR WOMEN EDUCATORS

See what SAMA has been up to in the “Year of Education”

The Southern Alleghenies Museum of Art continued its tradition of celebrating the area’s talented young artists with the return of Artists of the 21st Century, the Museum’s twenty-fourth annual student art exhibition. This exhibition was sponsored by the Sigma Chapter of Alpha Delta Kappa International Honorary Organization for Women Educators and is a project made possible through the AIE Partnership of the

Pennsylvania Council on the Arts, a state agency.

This year, SAMA was able to extend an invitation to the schools in the Bedford School District who participated in the Arts-In-Education program. Exhibitions were displayed in Bedford, Ligonier, and Loretto for several months during National Youth Art Month. Each day, artworks by individual students were shared on our social media

(cont. on page 2)

Inside this issue



UPCOMING EVENTS

READ ABOUT ART
CAMP AND OTHERS

Page 3



LOCAL ARTISTS

EXHIBITIONS
HIGHLIGHT ARTISTS IN
THE AREA

Pages 4 & 5



FUNDRAISERS

PAST SUCCESS AND
UPCOMING OCCASIONS

Pages 6 & 7

Subscribe to [our website](#) to join our email list and
be the first to know about events like these!



FIND US ON [FACEBOOK](#) AND [INSTAGRAM](#)

PLAN YOUR VISIT TODAY!

Year of Education *(cont' from front page)*

pages to support the students and the Year of Education.

Across all open SAMA museums, social media has been our main source of sharing information about the Year of Education. Each site has been featuring posts highlighting notable artworks from the permanent collection and artists in our Artist-In-Residence program. Follow our

Meta and Instagram accounts to see more from this year's educational programs and outreach. Share our posts to your profile to support arts in education in your community!

@SAMAaltoona

@SAMAbedford

@SAMAloretto

@SAMAligoniervalley

@SAMAjohnstown

ARTISTS OF THE 21ST CENTURY



A group project submitted by Tammy Weakland, Penn Cambria Middle School, Penn Cambria School District with education collection artworks in the background.

The exhibition is open to schools that participate in SAMA's Arts-in-Education or Artist-in-Residence program. Each district is permitted to submit up to 25 individual projects and two group projects. Through the programs, SAMA educators and professional artists travel to public and parochial schools to provide lessons designed to enhance students' understanding of art creation, technique, history, criticism, and aesthetics.

SAMA's award-winning education initiative is the largest of its kind in the Commonwealth. Artworks from the SAMA Education Collection that are used by the teaching artists in the Arts-in-Education program to educate students in a school setting accompany and supplement the exhibition. To learn more about the AIE or AIR programs or become a teaching artist, please contact Kristin Miller, at kmiller@sama-art.org.

BECOME A TEACHING ARTIST

The Artist-in-Residence (AIR) program allows students to interact directly with professional teaching artists in a student/mentor relationship with mutual involvement in the creative process. Presentations are designed to offer in-depth learning about particular artistic disciplines for students, teachers, arts groups, and the community at large.

Apply to be a teaching artist today to change a child's life tomorrow! Deadline for the 2022-23 school year, July 1, 2022.

Become a part of something special.

NEW SAMA EDUCATION COORDINATOR

We are pleased to announce the appointment of SAMA veteran Kristin Miller to the position of Education Coordinator. Miller has deep expertise in the field of education. She will work with the Pennsylvania Council on the Arts to represent SAMA who is the Arts in Education Partner in this region. Miller will be expanding SAMA's existing education programs in schools and communities in the six counties we serve: Bedford, Blair, Cambria, Fayette, Somerset, and Westmoreland.

EITC Sponsors

Benzel's Bretzel Bakery, Inc.
First National Bank

Little Enterprises, LLC
M & T Bank

SUMMER AT SAMA

Full Scholarships are available! Cost is \$125 per child.
\$25 deposit required. Register today!

Creative art woven into an exciting art camp experience for children. All activities are tailored to the children's ages and developmental levels and are taught in small, informal groups to foster each child's creativity, personal growth, and interests in the arts.

Camps are taught by Museum staff and professional visiting artists. There will be an exhibition reception for friends and family of the students' creations on the final day of

camp starting one hour before the close of camp.

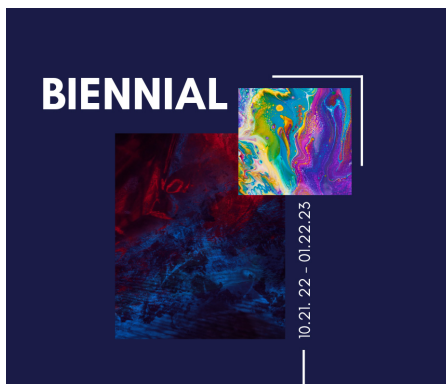
This year's activities will be lead by teaching artists Amy Roadman and/or Linda Callaway and the theme will be Faces of Art.

Visit sama-art.org to register or see more details. Call your local SAMA to ask about full scholarships.



BEDFORD: June 6-10, 2022
ALTOONA: July 25-29, 2022
LIGONIER: August 1-5, 2022
LORETTO: August 8-12, 2022

Mark Your Calendars



Fri, June 3rd | Loretto
Application Deadline
for October Biennial
exhibition

Be a part of the most exciting and rewarding exhibition in the region at SAMA Loretto! Each artist earns a chance at receiving cash awards up to \$1,000. The Museum will host an artists' reception on November 12, 2022 from 6-8 p.m. where awards will be announced and distributed. Apply at sama-art.org/biennial.



Sat, June 25 | Ligonier
Silhouettes Fashion Show
"From the Fig Leaf On..."
by Bonnie Resinski

Wear your favorite hat and join us for a dynamic show featuring Saint Francis University Costume Designer, Bonnie Resinski presenting, "Silhouettes: A One-Woman Fashion Show". The event is being held from 2-4 p.m. and the cost is \$30 per person. Reservations are required by Monday, June 20, 2022.



Sat, July 30 | Bedford
Michael M. Strueber
Exhibition and Opening
Reception Event

As a naturalist, Michael M. Strueber has a great knowledge, sensitivity and appreciation of his surroundings. Many of his still life paintings are conceived within his multiple acre gardens. His work is an attempt to share an increasingly endangered vision of the bountiful beauty Strueber experiences daily.

SAMA CELEBRATES



Joe Servello, *K-4 Design*, 2002.

The Fantastical World of Joe Servello

This exhibition is a celebration of Altoona and art history, joyfully depicting the muses of industry, literature, and art. Bringing together his varied work from the past 30 years, this unique exhibition will show the range, depth, and expertise of Servello. View his most recent paintings and sculptural wall pieces and the progression of his style and influences. This exhibition is his

first in over a decade, and we thank Benzel's Bretzel Bakery for sponsoring the exhibition.

Joe Servello's 90th birthday will coincide with the closing day of the show. Visit SAMA Altoona on June 19th, 2022 between 12:00 pm and 4:30 pm to enjoy celebratory snacks in honor of his birthday.

JOHNSTOWN TO REOPEN

Due to the COVID-19 pandemic, this museum branch located in the Pasquerilla Performing Arts Center has been closed. We're excited to announce reopening with the "Art of Healing: Reflections 2022" exhibition. It features approximately 35 works created by patients during SAMA's Museum/Healthcare Partnership Program residencies at Conemaugh Memorial Medical Center with SAMA teaching artist, Rita Haldeman. It will be on view May 16, 2022, through August 5, 2022. To celebrate the exhibition, attend the opening reception on Thursday, May 26, 2022, from 6-8 p.m. The reception is open to the public free of charge.



Register for events associated with exhibitions on our website at sama-art.org

SOMETHING 4 EVERYONE

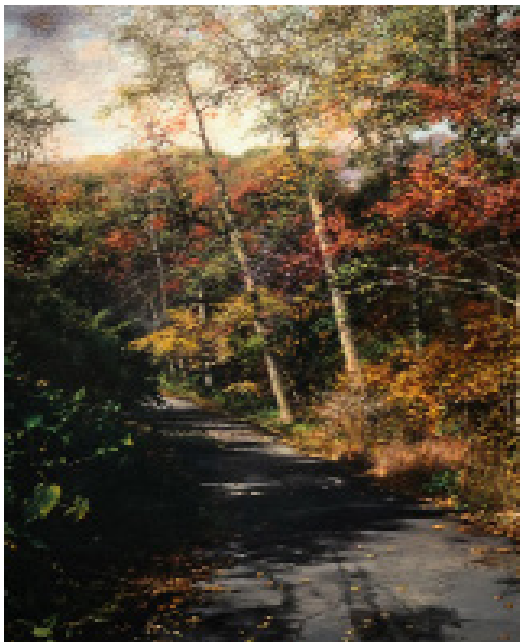
See how four unique artists blend their artwork to create one beautiful exhibition. This exhibition will be on display at SAMA Loretto from April 22, 2022, through June 5, 2022.



A collection of artworks by exhibition artists from left to right and top to bottom: Diana Williams, Dan Helsel, Stacy Datsko, and Kim Williams.

Stacy Datsko creates both functional and decorative pottery often marked with influences from outdoor adventures with her husband and two kids, faith, and nature. Dan Helsel started painting in 1995 and enjoys painting in the Old Masters style of such artists as Chardin, Vermeer, Rembrandt and Velazquez. Helsel works with real objects in the studio rather than from photographs. Diana Williams specializes in portrait and figure paintings, and her work showcases her ability to capture a likeness, to tell a story and present a vivid representation of the true essence of the subject. Kim Williams started creating at age eight when her encouraging parents and a teacher recognized her proclivity toward drawing and painting. Her work is often nature-themed featuring strong layout skills.

LOCAL ARTISTS

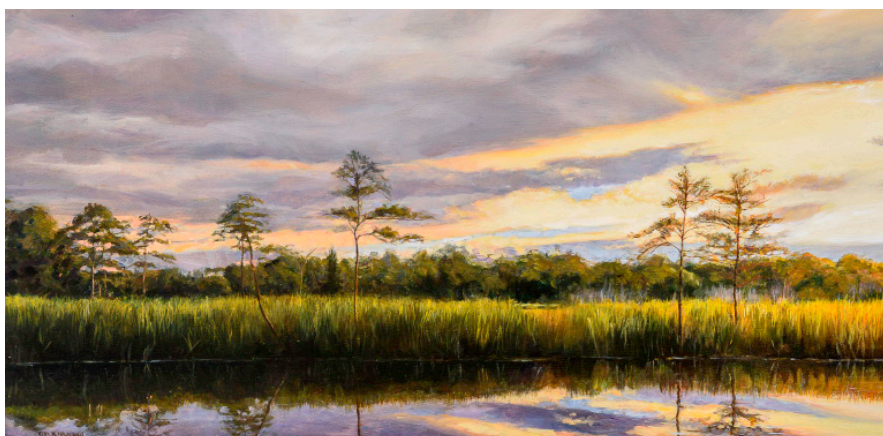


Michael Mosorjak, *Pathway to Ava*, 2009.

CONSERVATOR TO ARTIST

SAMA Bedford extends a heartfelt “Thank you” to the exhibition sponsor, Mr. Robert and Dr. Terri Nicole Sawyer for supporting this exhibition by Michael Max Mosorjak on display May 27, 2022 through July 17, 2022.

The Johnstown, Pennsylvania artist, Michael Mosorjak, is a contemporary artist practicing in oil and gouache painting techniques. His skillful, realistic renderings have not only gained him a following among art collectors, but also students, an instructor of art history and basic drawing as well as art enthusiasts as a lecturer on painting conservation. As a practitioner, extensive exposure to the work of many other artists has enriched his understanding of painterly skill. One learns a great deal from peers and predecessors, as individuality is realized and attained. To celebrate the exhibition, attend the opening reception on Friday, May 27, 2022, from 6-8 p.m.



Rita Haldeman, *The Edge of Evening*, 2022, 12x24 inches (2).

As Everywhere of Silver

Noted artists Rita Haldeman and Nicole Ryan will be showcasing their spectacular work from April 29, 2022, through August 7, 2022 at SAMA Ligonier.

Nicole Renee Ryan is a watercolorist, oil painter, and muralist from Mercer, PA. Nicole paints imagined landscapes, but surprisingly, she's not at all interested in traditional landscape paintings. Instead, she uses the landscape to explore the concept of memory. Rita K. Haldeman has always been

drawn to nature by its beauty, strength, and grandeur. She works to interpret this attraction through her paintings. Haldeman wants her work to speak for itself, inviting the viewer into the piece for deeper observation. Have lunch with these artists on Thursday, May 19, 2022 at noon to hear more about their work.

NEW DIRECTOR AT SAMA BEDFORD

We are pleased to announce the hiring of the new Site Director, Christi Draves.

Christi and her family relocated to the Bedford County area in August of 2020 and have already grown many permanent roots within the community. Her passion for helping the community and supporting our youth is clear. By creating new collaborations and friendships with many diverse community organizations, her hope is to assist and support all the ongoing revitalizing efforts in Bedford, while finding new innovative ways to bring more of the arts to all within our area.



SPRING RAFFLE

This spring SAMA raffled off Sheetz gift cards to raise funds for the 2022 Year of Education in celebration of our 46th Anniversary.

Our staff and trustees did an amazing job getting the word out and selling raffle tickets to friends, family, and visitors of SAMA.

Congratulations to the winners Barbara O'Brien and two anonymous donors who supported the cause.

We thank Sheetz for their generosity in donating prizes for this fundraiser.

FUNDRAISERS ARE BACK

A successful return of Dueling Pianos and an inaugural From Italy with Love event.

This Dueling Pianos annual fundraiser was chaired by Jen Daniels and Lindsey Kranich and held at Hollidaysburg's beautiful The Blairmont Club on Friday, November 1, 2021.

The event began with a cocktail and hors d'oeuvres reception. Dinner stations throughout the club followed

and were prepared by The Blairmont's celebrated chef. The highlight of this year's event was a live musical performance by the Flying Ivories, dueling piano group with artists based in NYC, Boston, Austin and Philadelphia.

Specializing in all-request, sing-along, totally interactive dueling piano shows, the Flying Ivories played music from all genres. The audience got involved in the pianist's antics in this combination musical performance and comedy act. Guests purchased incredible artworks for sale at the event, as well as unique experiences and gifts at the silent auction.

At a brand-new fundraiser by SAMA, From Italy with Love, guests indulged in the taste of Italy with wine from Tenuta Torciano Winery of Sicily. Co-chairs, Chrissey and Michael

Wagner, led the initiative to bring this exciting event to life at The Casino at Lakemont Park on Friday, February 11, 2022. There was live music by The Silver Linings, Italian food stations, wine tastings, silent auction, and SAMA raffles. The Tenuta Torciano Winery brought entertainers from the winery to share samples of a variety of red and white wines, the best balsamic vinegar we've ever savored, and olive oil that was a delight. This Valentine's themed event allowed guests to shower their sweethearts with gifts for Valentine's Day from a fabulous selection of silent auction items from local restaurants, flower shops, candy stores, and more.

Tentative dates for the next Dueling Pianos is November 4, 2022 and From Italy with Love is February 10th, 2023.



From Italy with Love fundraiser at The Casino at Lakemont Park.

DONATE. SPONSOR. ADVERTISE. SUPPORT.

Attending our signature fundraiser events is not the only way to help with SAMA fundraising.

Donate items for silent auction like paid vacations and weekend getaways, tickets to concerts and sporting events, and themed gift baskets.

Sponsor a table as a business or as a group of individuals to get reduced price tickets and be recognized in advertising and at the event as SAMA supporters.

Advertise your business with a print ad in the evening program to be seen by the crowd of diverse attendants.

Donate to SAMA's general operating campaign to allow for endless opportunities for your dollars to be put to use!

sama-art.org

GARDEN PARTY

Ligonier Valley is celebrating the silver anniversary of the museum.

This year's Garden Party theme celebrates the 25th Anniversary of the opening of the SAMA in Ligonier Valley. Wear silver on July 23rd to this fundraiser to celebrate the occasion and enjoy art, food, entertainment, and more.

The featured exhibition, "As Everywhere of Silver" will be on view in the main gallery and the artists, Rita Haldeman and Nicole Ryan, will be present to greet visitors and discuss their



work. Silver is a color both Rita and Nicole used often in their paintings to commemorate this occasion. The title, "As Everywhere of Silver", was chosen from the Emily Dickinson poem of the same name.



BELMONT STAKES 2022 GALA

GALA

The Belmont Stakes Gala promises to be a grand, sophisticated, and entertaining evening sponsored by the Bruno and Lena DeGol Family Foundation. Reservations are required by Friday, June 3rd.



Once again, our Gala committee and SAMA staff have planned a fabulous evening to include outdoor vistas as well as indoor fun. We encourage our guests to wear your horse racing attire and uniquely decorated hats as this is not only a tradition but also good luck for the wearer, male and female alike. The evening will be filled with music, laughter, amazing hors d'oeuvres, delicious sweets, an open bar, and the Belmont Stakes race shown live on the big screen. The auctions will feature art and sculpture, unique garden features, dream vacations, excursions, and overnight stays such as a Fallingwater private tour and nearby cabin retreat, and more. The Casino will be open all evening and players can use their winnings to buy beautiful, bountiful gift baskets; the silent auction will offer unique shopping fun.

Register, sponsor or advertise at sama-art.org.





PO Box 9, Loretto, PA 15940

Return Service Requested

NON-PROFIT
ORGANIZATION
U.S. POSTAGE
PAID
ALTOONA PA
PERMIT NO. 99



THE GALLERY is proudly sponsored by



BENZEL'S BRETZEL BAKERY, INC.

Altoona

1210 11th Avenue
Altoona, PA 16601
(814) 946-4464

Daily Hours:
Wednesday-Sunday:
12:00 PM - 4:30 PM

Bedford

137 E. Pitt St.
Bedford, PA 15522
(814) 589-3020

Daily Hours:
Wednesday-Sunday:
12:00 PM - 4:30 PM

Johnstown

450 Schoolhouse Road
Johnstown, PA 15904
(814) 269-7234

Opening May 16th.
Monday - Friday
12:00 PM - 4:30 PM

Ligonier

One Boucher Lane &
Route 711 South
Ligonier, PA 15658
(724) 238-6015

Daily Hours:
Wednesday-Sunday:
12:00 PM - 4:30 PM

Loretto

112 Franciscan Way
P.O. Box 9
Loretto, PA 15940
(814) 472-3920

Daily Hours:
Wednesday-Sunday:
12:00 PM - 4:30 PM



[/SMAAAltoona](#)
[/SAMABedford](#)
[/SAMAJohnstown](#)
[/SAMALigonier](#)
[/SAMALoretto](#)



[/SMAAAltoona](#)
[/SAMABedford](#)
[/SAMAJohnstown](#)
[/SAMALigonier](#)
[/SAMALoretto](#)

sama-art.org